

MONTHLY MEMBERSHIP PROGRESS REPORT

District 32 C

Results as of: 5/31/2024

GMT:

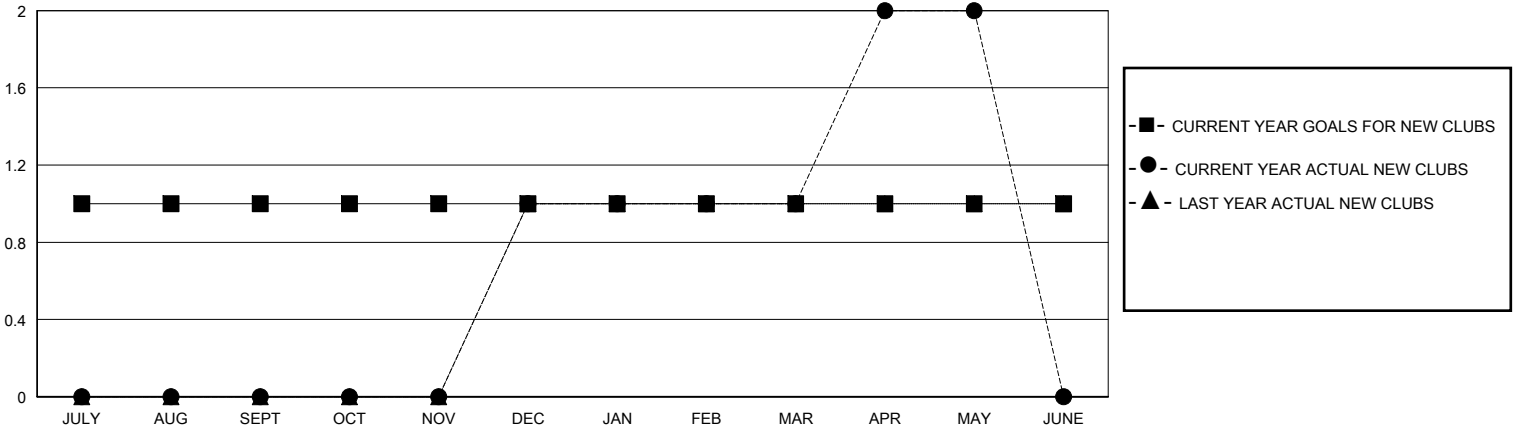
LOCATION SOUTH CAROLINA

GMT CA

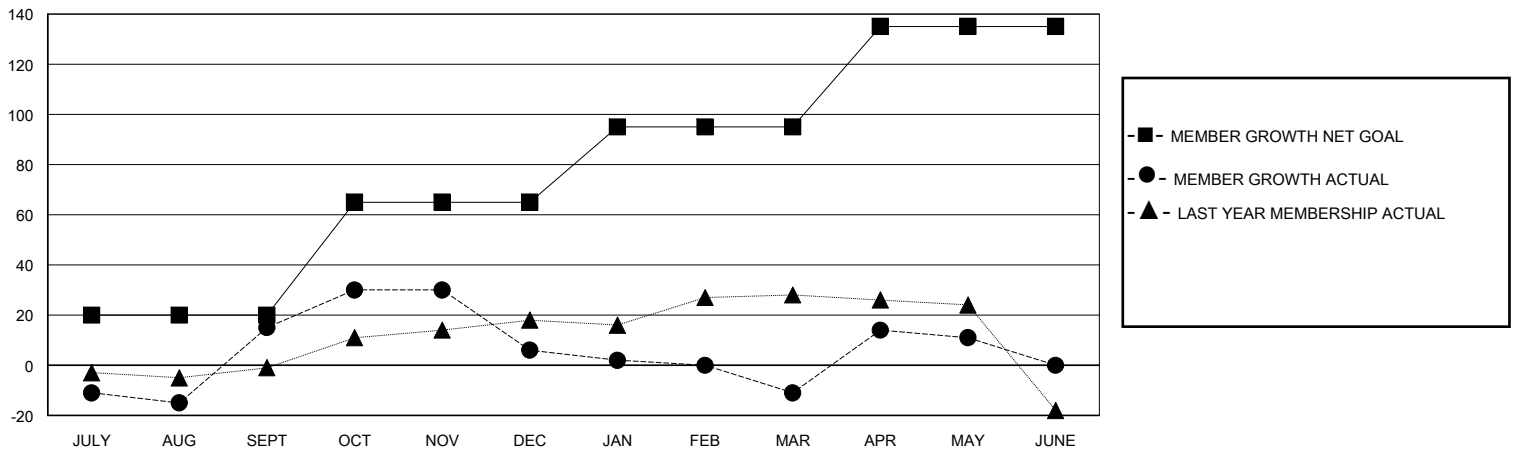
Clubs			
RESULTS FOR 2023-2024			
QUARTER	NEW CLUB GOAL	NEW CLUBS	DROPPED CLUBS
JULY/AUG/SEPT	1	0	0
OCT/NOV/DEC	0	1	3
JAN/FEB/MAR	0	0	0
APR/MAY/JUNE	0	1	0

Members			
RESULTS FOR 2023-2024			
QUARTER	MEMBER GROWTH NET GOAL	MEMBER GROWTH ACTUAL	DROPPED MEMBERS ACTUAL (including transfers)
JULY/AUG/SEPT	20	71	46
OCT/NOV/DEC	45	77	86
JAN/FEB/MAR	30	58	65
APR/MAY/JUNE	40	45	22

GOALS AND ACTUAL NEW CLUBS CUMULATIVE



GOALS AND ACTUAL MEMBERS CUMULATIVE



DROPPED CLUBS: 3

34 CLUBS OF 62 ADDED 1 OR MORE NEW MEMBERS

GENDER DISTRIBUTION

MALE 935 (65.94%)
FEMALE 483 (34.06%)

DROPPED MEMBERS

DECEASED	20
CLUB CANCELLED	27
OTHER	170
TOTAL	217

[CLICK HERE FOR CUMULATIVE MEMBERSHIP DATA](#)

TOTAL FAMILY UNIT MEMBERS	263
FAMILY MEMBERS PAYING HALF DUES	132